



ST. ANNE'S
R.C. VOLUNTARY ACADEMY

SEND Autumn Newsletter

Welcome from the SENDCo

Welcome to our first SEND newsletter of the academic year. This will be published each term to provide you with updates and support around SEND provision within our school. I would like to take this opportunity to introduce myself properly following a brief introduction by Mr Logue in his Summer correspondence to parents and carers back in late June.



I am Amy Morgan and I was appointed as SENDCo in September 2021. I have worked as an English teacher and Head of Year at St Anne's since June 2019 and continue to teach English to students in both KS3 and KS4.

I have met with many parents and carers already but will be arranging a coffee morning in the New Year which will provide you with the opportunity to speak with myself, our Learning Support Assistants and other parents and carers within an informal setting. However, if you would like a one-to-one meeting prior to this, please get in touch via telephone or email and I will be happy to facilitate this:

Tel: [01614328162](tel:01614328162)

Email: admin@stannesrcvoluntaryacademy.com

The BEST Centre

We have made some exciting changes to the SEND department this year with our BEST Centre relocating next to Pastoral within the main quadrangle of the school. The BEST Centre name was chosen by our St Anne's pupils and stands for Building Essential Skills Together.

I am passionate about SEND being a golden thread throughout our school and our new BEST Centre location reflects this vision as it is now situated at the heart of St Anne's.

I feel privileged to have been able to provide a space within the school, where a small number of students can access bespoke support in addition to the St Anne's Universal Offer. Within the BEST Centre, we



continue to promote high expectations by delivering a range of interventions to support learning across the curriculum. Again, please get in touch, if you would like further information.

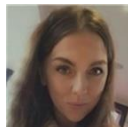


Learning Support Assistants

Each member of the SEND team is a Key Worker within a year group. Our LSAs provide in-class support, deliver interventions and review and update Student Passports to ensure they are student-centred. Our LSAs provide teaching staff with the most up-to-date information and strategies for our SEND learners and work collaboratively in the classroom to ensure that all students can access a curriculum that is broad and balanced and promotes high expectations.

We currently have two LSA vacancies advertised so that we can continue to support all of our students across all year groups. Our current set-up is listed below:

Miss G Niebel- Year7 and Intervention Lead



Mr T Deasy- Year 8/9



Miss K Wilson- Year 10



Mrs F Wright- Year 11



Student Passports

One of the ways that we support our learners at St Anne's is by providing staff with important information about your child's needs. We collate this information into a document called a Student Passport and these are regularly updated based upon the feedback that we receive from the young person themselves and from their parents and carers.

This year, we have made important changes to our Student Passports by linking them to Class Charts; our school's behaviour system. As a result, staff can now access the Student Passports at the click of a button and can plan accordingly for their learner's needs.

In the Spring term, we will be contacting all parents and carers to update the Student Passports. We would welcome any feedback so that we may provide the right support so that your child can engage fully in their education and achieve their outcomes.

Spotlight on... Sensory Impairments

I recently took part in some refresher training, which was delivered by Stockport's Sensory Support Service. The SSS assist and support young people with Vision, Hearing and other sensory impairments.

We have a number of students at St Anne's who have Hearing or Vision Impairments. The additional work that is needed to concentrate and complete work within a bustling classroom environment can prove exhausting. Katy, who is one of our wonderful students in Yr11 has a Hearing Impairment and explains how this affects her and what staff do to support her:

"Sometimes I find it difficult to focus if there is background noise in the classroom, for example during group work or class discussions. This means I have to focus more and it can be tiring. Sometimes I feel different to my peers, which I don't like. In class, teachers make sure I am sat toward the front, check in with me at the start of tasks to ensure I understand what I have to do and print off the work with instructions so that I can complete tasks."

Support for Parents/Carers

Navigating the world of SEND can be difficult, particularly when there is a specific piece of information or package of support that you are trying to access. Within Stockport and Greater Manchester, there are a range of facilities and agencies available for young people with SEND and their families. Please find links to the Local Offers for Stockport, Manchester and Tameside below. These links can also be found within our Information Report on the St Anne's website.

Stockport:

<https://stockport.fsd.org.uk/kb5/stockport/fsd/localoffer.page;jsessionid=EB3A21F15F48A5F88DDB8EF9F8D46B91?localofferchannel=0>

Manchester:

<https://hsm.manchester.gov.uk/kb5/manchester/directory/localoffer.page?localofferchannel=0>

Tameside:

<https://www.tameside.gov.uk/localoffer>